

## ELECTRONIC PROPORTIONAL CONTROL UNIT

for proportional  
POSIFLOW solenoid valves


 Series  
**908**
**FEATURES**

- Converts analog input control signals to coil current of a proportional solenoid valve by means of pulse width modulation
- Switch-off function at less than 2% of the maximum control signal
- Adjustable ramp control
- Output coil current independent of coil resistance (temperature) and supply voltage variations
- Min. and max. output coil current adjustable to required input control signal
- The electronic circuit is integrated in a housing connectable to a 3-terminal spade plug coil connector according to ISO 4400/ EN 175301-803, form A, DIN 43650, 11 mm, industry standard B or DIN 43650, 9,4 mm, industry standard B

**GENERAL**

**Nominal voltage** 24 V DC  
**Maximum current** 1100 mA

**CONSTRUCTION**

**Housing** PA  
**Cover** PA  
**Screw** Zinc plated steel  
**Seals** NBR

**ELECTRICAL CHARACTERISTICS**

**Connector** Spade plug (cable Ø 6-10 mm)  
**Connector specification** ISO 4400 / EN 175301-803, form A <sup>(2)</sup>  
**Valve connection** With 3 terminal plug connection  
 Control unit E908A001 ISO 4400 / EN 175301-803, form A  
 Control unit E908A003 DIN 43650, 11 mm, industry standard B  
 Control unit E908A004 DIN 43650, 9,4 mm, industry standard B, assembled to 200 mm cable

**Electrical safety** IEC 335  
**Electrical enclosure protection** IP65 (EN 60529)  
**Supply voltage** DC (-): 24V ±10% (U<sub>n</sub>), max. ripple 10%

prefix option	max. full load current (I <sub>F</sub> ) (mA)	input control signal (selectable)			power consumption (electronics) (W)	Unit ambient temperature range <sup>(1)</sup> (C°)	type <sup>(1)</sup>
		U <sub>c</sub> = (V)	I <sub>cx</sub> (mA)	I <sub>c</sub> (mA)			
-	1100	0 - 10	0 - 20	4 - 20	0,8	-10 to +75	01 - 02

**Switch-off current** < 2 % of max. input control signal  
**Adjustable offset** Upwm 15 - 50 % E.D.  
**Adjustable full load** Upwm 30 - 100 % E.D.  
**Ramp time** Selectable on/off, adjustable 0,1 - 3 sec.  
**Adjustable switch frequency** 40 - 700 Hz



**SPECIFICATIONS**

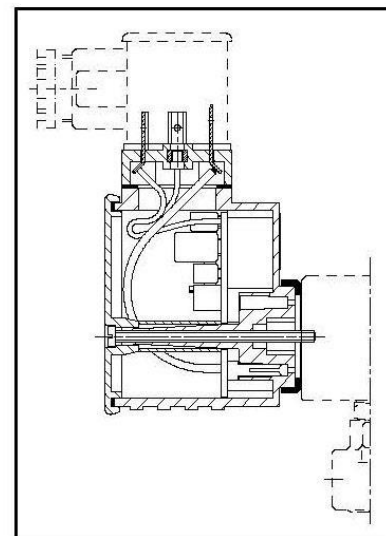
recommended for proportional valve types	type	catalogue number
202A001V to 202A087V 203B001V and 203B002V	01	PV 2920
202A201V to 202A208V 202A101V to 202A104V 202A105V to 202B108V	02	PV 2910
	01	

<sup>(1)</sup> Refer to the dimensional drawings on the following page.

<sup>(2)</sup> The connector is supplied with each control unit. Do not use the standard connector mounted on the POSIFLOW solenoid valves.

**PROPORTIONAL VALVES SUITABLE FOR CONTROL APPLICATIONS**

description	series	illustration	catalogue page
3-port proportional valve for pressure control	602		see P308 in the "Pneumatic Components" catalogue
Posiflow proportional solenoid valves	202 203		See our "Proportional Technology" catalogue at: <a href="http://www.asconumatics.eu">www.asconumatics.eu</a>



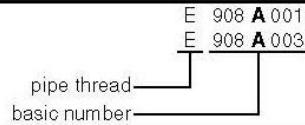
## OPTIONS

- ASCO can offer any adaption or modification to the control unit to meet special requests from the users' field

## INSTALLATION

- The control unit can be mounted in any position without affecting operation
- The connector to ISO 4400 / EN 175301-803, form A, is supplied with each unit
- Catalogue number E908A004: The 4-terminal connector to ISO 4400 / EN 175301-803, form A, is supplied with each unit. The outlet to the solenoid valve is fitted with a 200 mm long cable with a connector to DIN 43650, 9,4 mm, industry standard B
- Installation and maintenance instructions are included with each control unit

## ORDERING EXAMPLES:

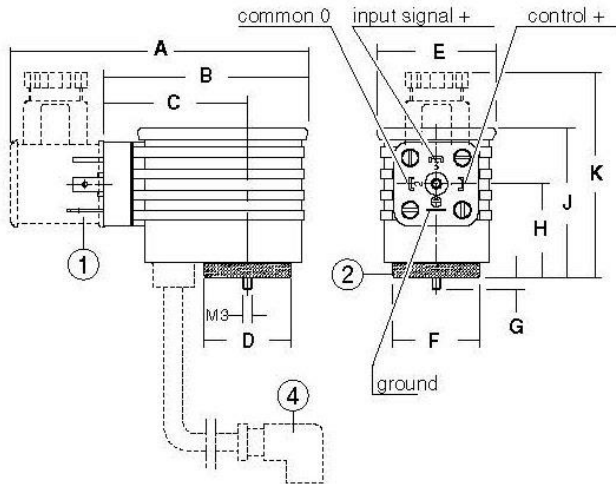


## DIMENSIONS (mm), WEIGHT (kg)



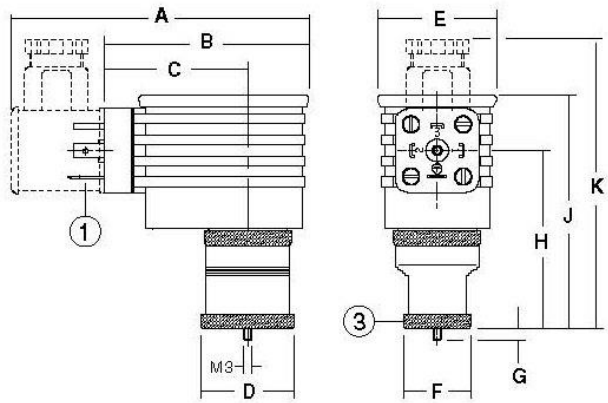
**TYPE 01**  
POSIFLOW control unit  
IEC 335 / ISO 4400  
IP65

E908A001 - E908A004



**TYPE 02**  
POSIFLOW control unit  
IEC 335 / ISO 4400  
IP65

E908A003



type	catalogue number	A	B	C	D	E	F	G	H	J	K	weight (1)
01	E908A001/004	98	70	48	30	41	30	4	32	51,5	70	0,1
02	E908A003	98	70	48	32	41	23	4	61	80	98	0,1

(1) Weight without connector.

- ① Supply, 4 terminals, ISO 4400/EN 175301-803, form A  
Solenoid valve connection:
- ② 3 terminals, ISO 4400/EN 175301-803, form A
- ③ 3 terminals, DIN 43650, 11 mm, industry standard B
- ④ 3 terminals, DIN 43650, 9,4 mm, industry standard B

## VOLTAGE-CURRENT / TIME DIAGRAM

